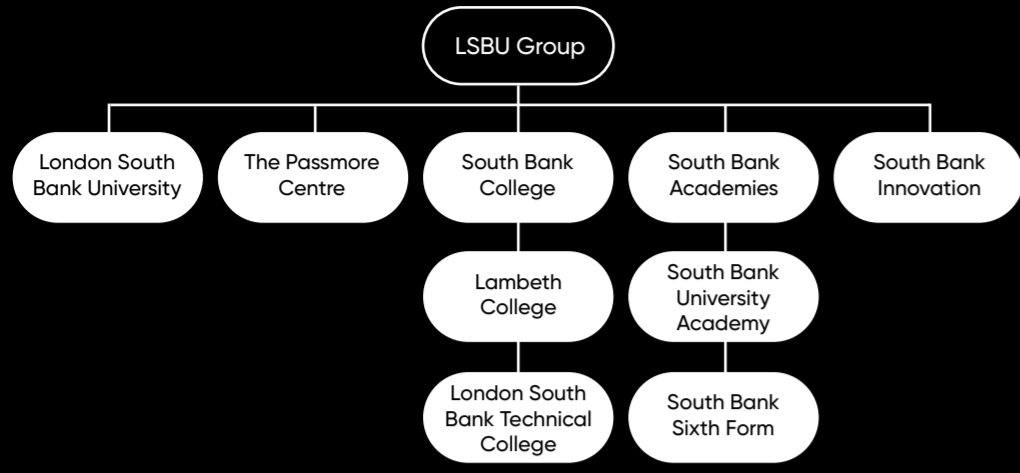


## Fit for the future, ready for the real world.

Our goal is to help you succeed, no matter what your age, background, or educational experience. We provide career focussed pathways across all levels, from Entry to Level 8, providing high quality education and sector specific learning to prepare you for your life beyond education and qualifications.



Joining LSBU Group gives our students unrivalled access to educational opportunities, advice and guidance as well as sought-after apprenticeships and work placements. Our students are guaranteed progression to both LSBTC and LSBU\*.

Whether your next destination is within LSBU Group or elsewhere, we are one of a handful of providers who offer students the opportunity to progress to one of our new Level 4 one-year courses. Successful completion of this enables our students to fast-track to year 2 of an LSBU degree, saving money as well as providing a standalone, qualification that employers recognise should you decide to leave your studies there.

\*after successful completion of a Group qualification that has a progression route

Part of **LSBU | GROUP**

**LAMBETH**  
SB COLLEGE  
Part of LSBU | GROUP

**LONDON SOUTH BANK**  
SB TECHNICAL COLLEGE  
Part of LSBU | GROUP

**South Bank**  
University Academy  
Part of LSBU | GROUP

**SBU**  
SIXTH  
Part of LSBU | GROUP

**LSBU**  
London South  
Bank University

### Further information about careers in Information Technology can be found here:

<a href="http://www.careerpilot.org.uk">www.careerpilot.org.uk</a>	<a href="http://www.nationalcareers.service.gov.uk">www.nationalcareers.service.gov.uk</a>	<a href="http://www.startprofile.com">www.startprofile.com</a>
<a href="http://www.prospects.ac.uk">www.prospects.ac.uk</a>	<a href="http://www.careersmart.org.uk">www.careersmart.org.uk</a>	Biology: <a href="http://www.rsb.org.uk">www.rsb.org.uk</a>
Chemistry: <a href="http://www.rsc.org">www.rsc.org</a>	Dentistry: <a href="http://www.bdia.org.uk">www.bdia.org.uk</a>	Environmental Science: <a href="http://www.the-ies.org">www.the-ies.org</a>
Psychology: <a href="http://www.bps.org.uk">www.bps.org.uk</a>	Physics: <a href="http://www.iop.org">www.iop.org</a>	Physiotherapy: <a href="http://www.csp.org.uk">www.csp.org.uk</a>
Sport and Exercise: <a href="http://www.bases.org.uk">www.bases.org.uk</a>		Forensic Science: <a href="http://www.csfs.org">www.csfs.org</a>

Places on Applied Science and Dental courses, at all levels, are highly sought-after every year. If you believe this is the career pathway for you, but you lack hands-on experience, then we advise you to seek a placement prior to applying.

### The following websites are a great place to start:

<a href="http://www.england.nhs.uk/participation/get-involved/volunteering">www.england.nhs.uk/participation/get-involved/volunteering</a>	
<a href="http://www.guysandstthomas.nhs.uk/careers/other-types-of-work/volunteering/volunteering.aspx">www.guysandstthomas.nhs.uk/careers/other-types-of-work/volunteering/volunteering.aspx</a>	
<a href="http://www.kch.nhs.uk/about/get-involved/volunteering">www.kch.nhs.uk/about/get-involved/volunteering</a>	<a href="http://www.london.gov.uk/what-we-do/volunteering">www.london.gov.uk/what-we-do/volunteering</a>
<a href="http://www.southlondoncares.org.uk/get-involved">www.southlondoncares.org.uk/get-involved</a>	<a href="http://www.handsonlondon.org.uk">www.handsonlondon.org.uk</a>
<a href="http://www.healthwatchlambeth.org.uk/volunteer">www.healthwatchlambeth.org.uk/volunteer</a>	<a href="http://www.britishteachers.org.uk/volunteer">www.britishteachers.org.uk/volunteer</a>

**LSBU | GROUP**



# APPLIED SCIENCE AND DENTAL

**LAMBETH**  
SB COLLEGE  
Part of LSBU | GROUP

**LONDON SOUTH BANK**  
SB TECHNICAL COLLEGE  
Part of LSBU | GROUP

**SBU**  
SIXTH  
Part of LSBU | GROUP

**South Bank**  
University Academy  
Part of LSBU | GROUP

**LSBU**  
London South  
Bank University

## The Need for Applied Scientists

There has never been a better time to consider entering this rewarding industry. The life sciences directly employ over 268,000 people across the country and consists of over 6,600 businesses. With careers that range from Clinical research to Sport and Exercise Scientists, there are thousands of exciting opportunities within the sector.

**Over 6,500**  
new jobs were  
published in the  
table across the life  
sciences sectors

**Vacancy listings**  
in Greater London  
alone being in  
excess of  
**2,400 new jobs**

**A report by The Board**  
of Trade found that  
the overall life science  
sector had an annual  
turnover of **£89 billion**

**Laboratory roles**  
were the busiest  
scientific function,  
with over **1,000 new**  
scientific vacancies.

## An Introduction to Applied Science

Applied sciences refer to science subjects that involve applying scientific principles to practical settings. Whereas Pure Science is the research that focuses on theoretical aspects of different topics, Applied Science takes these findings and – through experimentation, testing, and practical application – implements them in a real-world context. A huge and varied number of industries require Applied Scientists, including dentistry, clinical healthcare, disease prevention, engineering, technology, manufacturing, conservation and ecology, professional sports, psychology, physiotherapy, criminology, forensics, energy and pharmaceuticals.



**APPLY NOW**



## Is Applied Science and Dental the Right Pathway for You?

If you enjoy all things science, have a passion for problem solving and a great eye for detail- a career in Applied Science could be for you. Science is always evolving so you'll be a lifelong learner, staying up to date on the latest breakthroughs and discoveries.

Applied science is often very hands on and involves practical experiments and working with equipment in laboratories.

### Careers in Applied Science

Studying applied science can open a world of job opportunities. From working in labs to being part of research teams, you could be contributing to discoveries and innovations. In the UK STEM related jobs are growing at a rate of around 1.7 times faster than non-STEM jobs.

In 2022, there were approximately 668,000 people employed by the NHS in full-time clinical roles, and many of these medical professionals work in the Applied Sciences; it is estimated that the NHS will require an additional 314,000 full-time staff by 2031 in order to meet the country's needs – meaning there has never been a better time to consider entering this vital and rewarding industry.

The private sector also offers excellent career prospects and job opportunities for the right person. The life sciences as a whole (of which Applied Science is a key part) directly employs 268,000 people across the country (excluding the NHS and public sector), and consists of over 6,600 businesses. When factoring in those employees that are employed in the wider life sciences industry this figure is actually closer to 580,000.

What's more, 50% of all life science jobs are located in London, East of England and the South East – meaning that when you study with LSBU Group, you're already perfectly positioned in the heart of the scientific sector.

Employers, actively seek LSBU Group Applied Science graduates with accredited degrees, as they're a mark of quality assurance and professional relevance.

Our industry connections include The Worshipful Company of Bakers, the London Fire Brigade, Met Police, the NHS, England Rugby and the Rio Ferdinand Foundation.



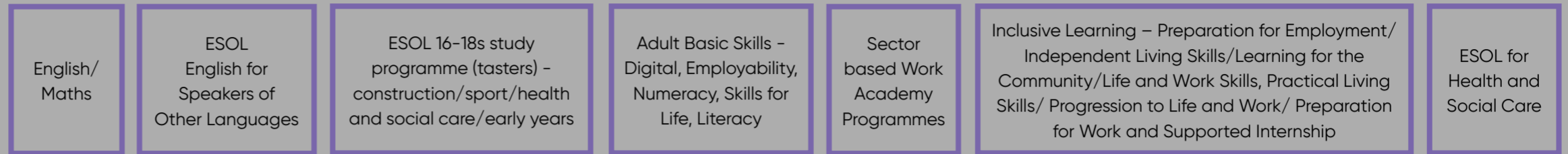
### There are plenty of opportunities open to you. Here are just a few ideas:

- Biomedical Scientist
- Chemist
- Chemical Technician
- Clinical Researcher
- Criminologist
- Dental Nurse
- Environmental Scientist
- Field Application or Support Scientist
- Food Scientist
- Forensic Scientist
- Laboratory Analyst
- Laboratory Technician
- Marine Biologist
- Medical Science Liaison (MSL)
- Microbiologist
- Molecular Biologist
- Pharmaceutical Sales and Marketing
- Pharmacologist
- Physiotherapist
- Psychologist
- Radiologic Technologist
- Research Assistant
- Sport and Exercise Scientist
- Sustainability Manager
- Technical Application or Support Scientist
- Technical Sales Specialist

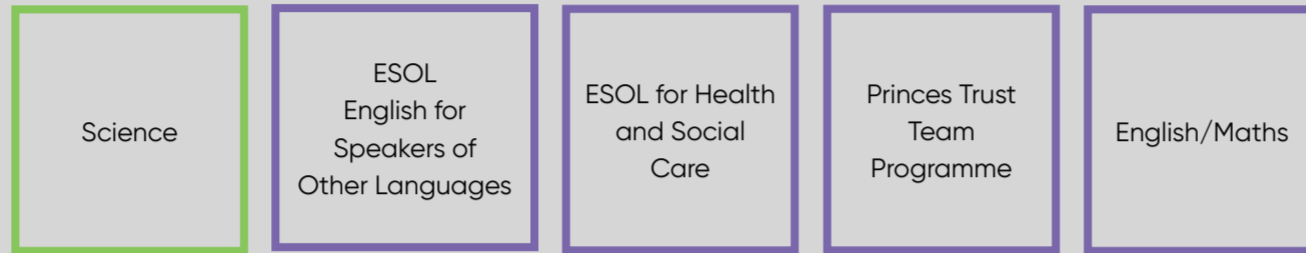
# APPLIED SCIENCE AND DENTAL



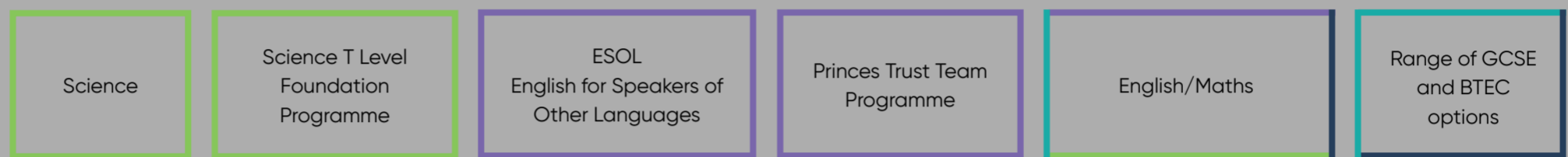
**ENTRY LEVEL**  
Award, Certificate (ELC), Diploma  
English for speakers of other languages (ESOL)  
Essential skills  
Functional skills  
Skills for Life



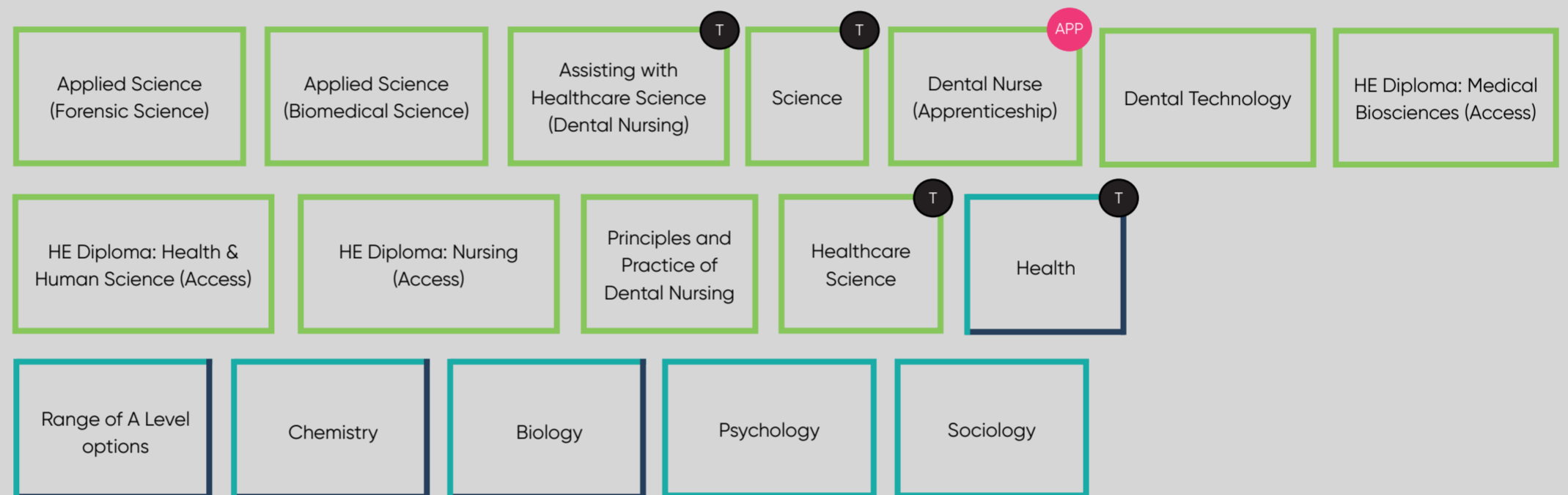
**LEVEL 1**  
First Certificate, Award, Certificate, Diploma, ESOL  
Essential skills  
Functional skills  
National vocational qualification (NVQ)



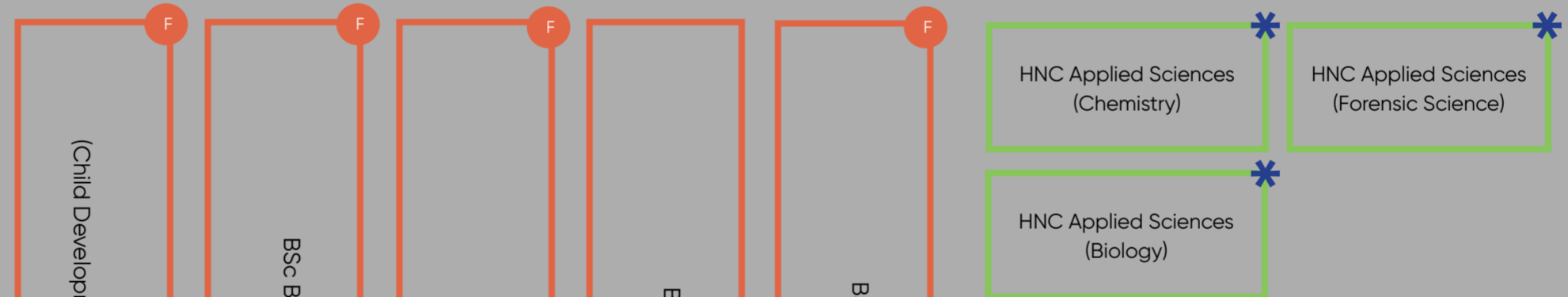
**LEVEL 2**  
Intermediate Apprenticeship, Award, Certificate, Diploma, ESOL  
Essential skills  
Functional skills  
GCSE  
NVQ



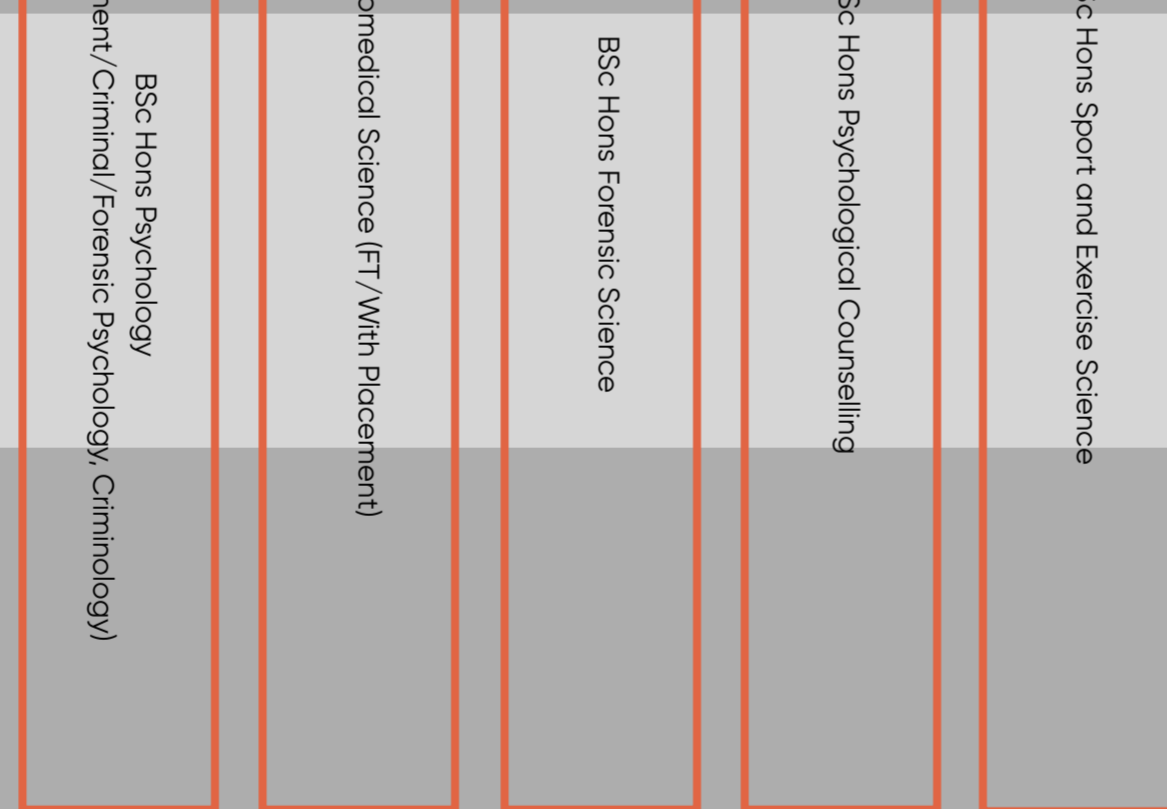
**LEVEL 3**  
Access to HE Diploma  
Advanced Apprenticeship  
A Level  
Applied General  
Award, Certificate, Diploma, ESOL  
NVQ  
T Level



**LEVEL 4**  
CertHE  
Higher Apprenticeship  
HNC  
Award, Certificate, Diploma  
NVQ



**LEVEL 5**  
DipHE  
Foundation Degree  
HND  
Award, Certificate, Diploma  
NVQ



**LEVEL 6**  
Degree Apprenticeship  
Degree (with or without Honours)  
Graduate Certificate/Diploma  
Award, Certificate, Diploma  
NVQ



**LEVEL 7**  
Integrated Master's Degree  
Award, Certificate, Diploma, NVQ, Master's Degree  
Postgraduate Certificate / Diploma  
Postgraduate Certificate in Education (PGCE)



**LEVEL 8**  
Doctorate (PhD or DPhil)  
Award, Certificate, Diploma



T T Level, includes 45-day industry placement

\* Direct yr2 entry on to LSBU degree programme on successful completion

APP Apprenticeship

F Foundation year available